



1014 Valhalla Terrace

Pickering, ON | Lot 130L



FOR SALE | \$959,990

- Semi-Detached Home
- 37' Frontage & 80' Depth
- Brand New Home From Builder With Tarion Warranty



4



2.5

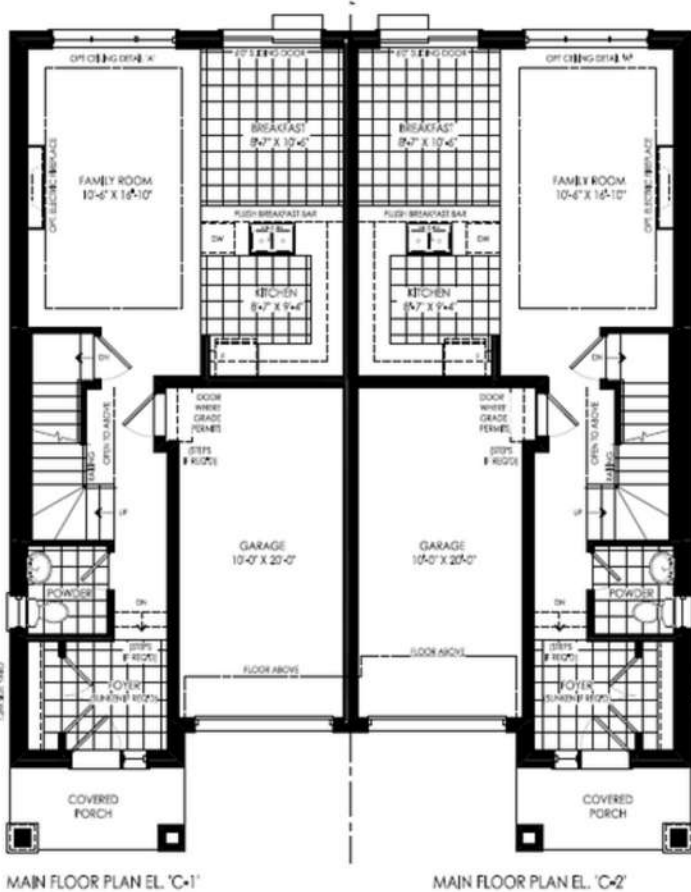


1,513 SQ. FT.



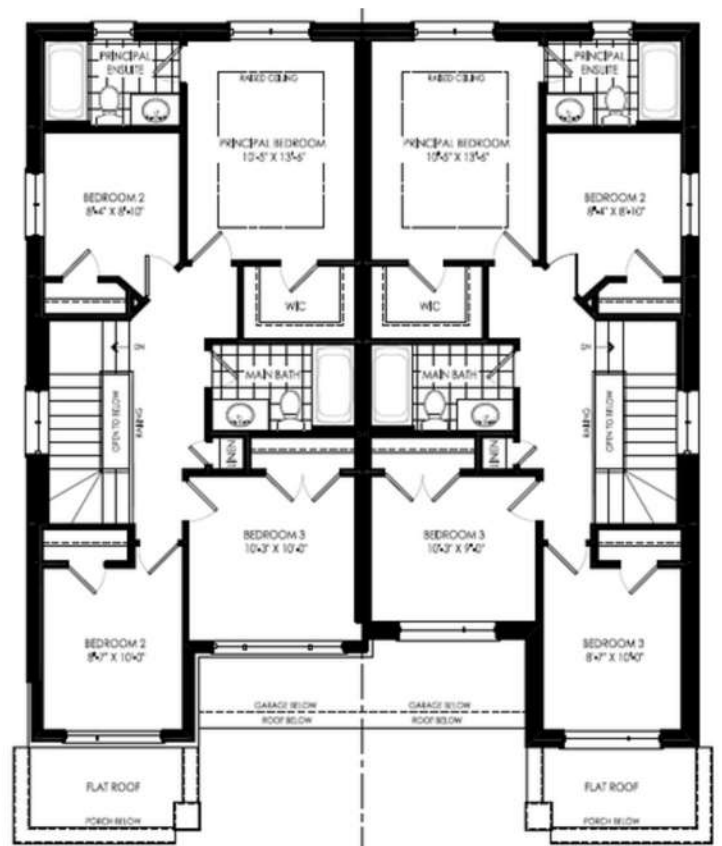
SD-01 OPT | Elev. C1





MAIN FLOOR PLAN EL 'C-1'

MAIN FLOOR PLAN EL 'C-2'



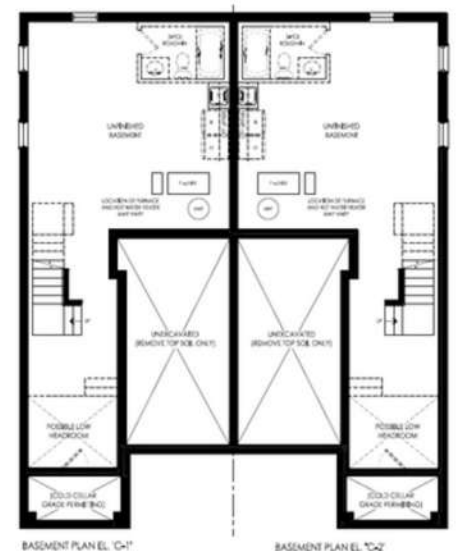
OPT. 4 BEDROOM UPPER FLOOR PLAN EL 'C-1'

OPT. 4 BEDROOM UPPER FLOOR PLAN EL 'C-2'

Features & Finishes

ENERGY STAR CERTIFIED HOME

- 9' ceilings on main & second floor
- Large windows throughout
- Quartz countertop in kitchen
- Undermount sink with pull-out faucet, water purifier
- Stainless steel hood fan
- Hardwood on main floor
- Smooth ceiling on main floor
- 8' tall sliding door leading to wood deck on main floor
- Stained oak staircase with square pickets
- 4-piece ensuite in principal bedroom
- Raised smooth ceiling in principal bedroom
- Walk-in closet in principal bedroom
- OPUS "Healthy Home" Package Includes: Air Conditioning Unit, Humidifier, HRV & Water Filtration System
- Larger basement windows
- 3-piece bathroom rough-in located in basement
- 200 AMP electrical service
- Central VAC & EV charger rough-in's located in garage
- Direct access from garage to main floor and basement stairs



BASEMENT PLAN EL 'C-1'

BASEMENT PLAN EL 'C-2'



INVENTORY TERMS & CONDITIONS

Client acknowledges that this is an inventory lot and may not have access to all selections and floorplan options. The Vendor will transfer to the client any guarantees and warranties received from the manufacturer or suppliers. Client is aware that the exterior colour package has been chosen and assigned already for this model and may not match the above image. Please speak to a sales representative for further information. Prices include HST. Prices and promotions are subject to change without notice. Some conditions may apply. All lots are subject to availability. All measurements are approximate. E & O.E. April 2025

